

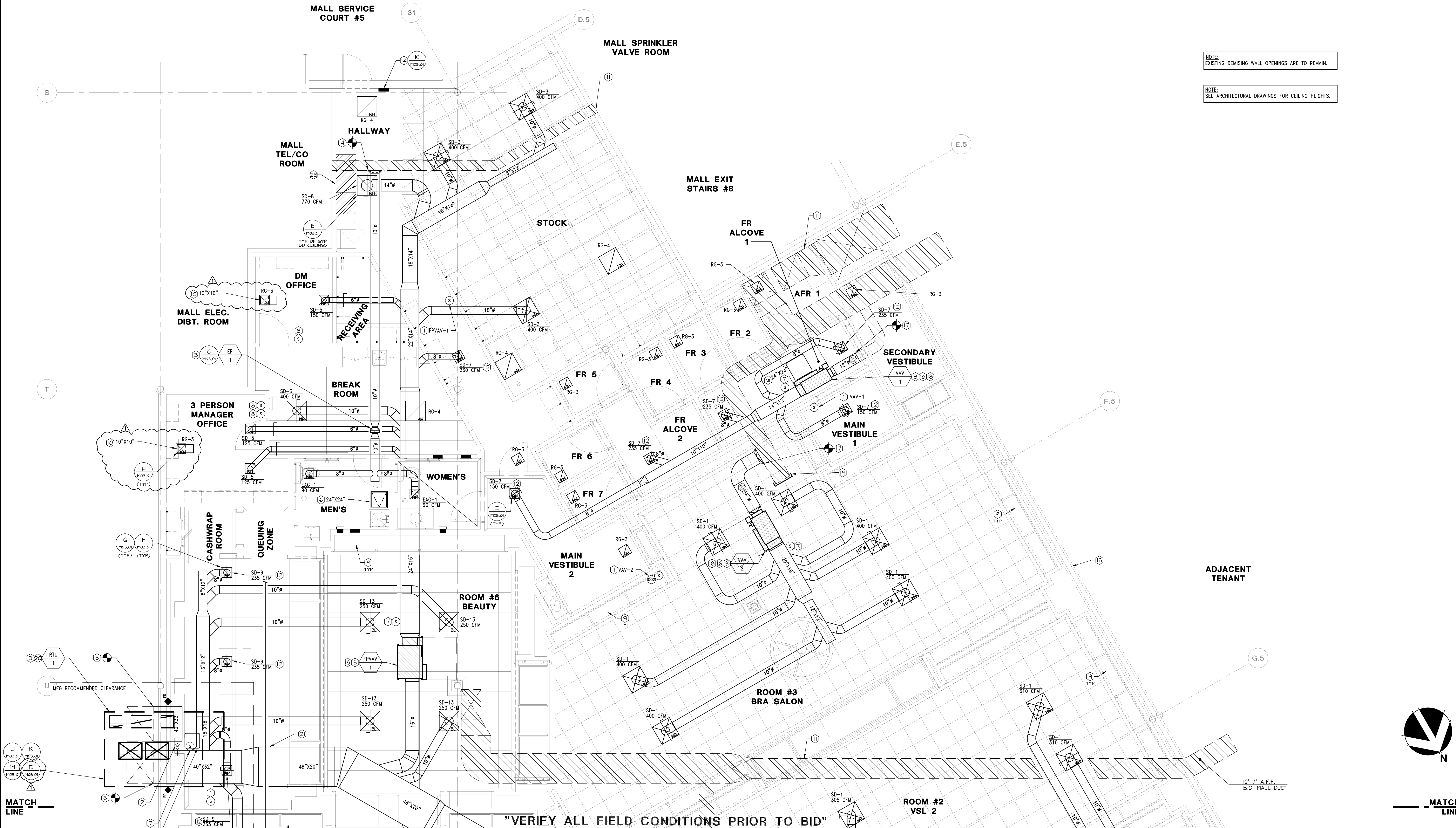
- ① TEMPERATURE AND CARBON DIOXIDE SENSORS FURNISHED BY MANUFACTURER, INSTALLED AND WIRED BY MALLS CONTRACTOR, WAYPOINT, AT TENANT'S EXPENSE AT 48" A.F.F. SEE SHEET M04.01 FOR RESPONSIBILITY SCHEDULE. WAYPOINT SHALL WIRE THE VAV BOX INTO THE BAS COMMUNICATION LOOP, MOUNT THE SPACE TEMPERATURE SENSOR, AND ASSIST TENANT TO ACCOMPLISH FINAL SYSTEM BALANCING, ALL AT TENANT'S EXPENSE. CONTACT: ANDREW SEGAL OR PAUL BENNET AT 770-649-6100.
- ② DUCT MOUNTED RETURN AIR SMOKE DETECTOR FURNISHED BY FIRE ALARM CONTRACTOR AND INSTALLED IN DUCT BY MECHANICAL CONTRACTOR WITH FINAL WIRING CONNECTION BY MALL'S CONTRACTOR. POWER WIRING SHALL BE PROVIDED BY FIRE ALARM CONTRACTOR. INTERLOCK TO SHUT DOWN UNIT ON SIGNAL FROM FIRE ALARM SYSTEM. CONTACT APEX FIRE PROTECTION, LLC, JERRY BROOM 770-315-9260.
- ③ TENANT CONTRACTOR SHALL FIELD VERIFY EXACT LOCATION OF ALL HVAC EQUIPMENT. COORDINATE WITH LANDLORD ENGINEER PRIOR TO BID AND CONSTRUCTION.
- ④ CONNECT TO EXISTING LANDLORD TOILET EXHAUST MAIN. TRANSITION TENANT TOILET EXHAUST DUCT AS REQUIRED.
- ⑤ CONNECT TO EXISTING DUCT MAIN IN CHASE. TRANSITION DUCT AS REQUIRED. RAISE EXISTING DUCT MAIN AS HIGH AS POSSIBLE SO THAT NEIGHBORING TENANT CAN ACHIEVE MAXIMUM CEILING HEIGHT. PROVIDE FIRE DAMPER IN DUCT MAIN PENETRATING DEMISING WALL AS REQUIRED.
- ⑥ ACCESS PANEL BY GC IN THIS LOCATION FOR ACCESS TO EQUIPMENT ABOVE CEILING. REFER TO ARCHITECTURAL PLANS.
- ⑦ SUPPLY AIR TEMPERATURE SENSOR FURNISHED BY MANUFACTURER, INSTALLED IN DUCT BY MECHANICAL CONTRACTOR WITH FINAL WIRING CONNECTION BY MALL'S CONTRACTOR. SEE NOTE #1 FOR CONTACT INFO. SEE SHEET M04.01 FOR RESPONSIBILITY SCHEDULE.
- ⑧ PROVIDE ACUTHERM ADJUSTER-D DIGITAL WALL ADJUSTER THERMOSTAT IN THIS LOCATION.
- ⑨ RETURN AIR THROUGH OPENING IN BACK OF VALANCE ABOVE CABINET. REFER TO ARCHITECTURAL PLANS.
- ⑩ PROVIDE RETURN AIR BOOT WITH ACOUSTICAL DUCT LINER. REFER TO DETAIL H/M03.01. LINER SHALL BE 1" THICK 3 PCF DENSITY, LONG TEXTILE TYPE FIBER, WITH SURFACE CLEANABLE PER NAIMA DUCT-CLEANING GUIDELINES. INSTALL LINER IN ACCORDANCE WITH SMACNA DUCT CONSTRUCTION STANDARDS. LAMINATE LINER TO INTERNAL SURFACES OF DUCT IN ACCORDANCE WITH LINER MANUFACTURER'S INSTRUCTIONS, AND FASTEN WITH MECHANICAL FASTENERS.
- ⑪ EXISTING LANDLORD DUCTWORK TO REMAIN.
- ⑫ PROVIDE YOUNG REGULATOR CABLE CONTROLLED BALANCING DAMPER, BOWDEN CABLE CONTROL KIT, CONTROL WIRE AND CASING, OR LSO&C APPROVED EQUAL. INSTALL CABLE CONTROLLER IN CEILING NEAR DIFFUSER, IN ACCORDANCE WITH MANUFACTURER'S RECOMMENDATIONS, OR OTHER APPROVED LOCATION. TYPICAL OF ALL INACCESSIBLE MANUAL VOLUME DAMPERS LOCATED ABOVE OYP. BOARD CEILINGS OR DAMPERS WHICH ARE OTHERWISE INACCESSIBLE. REFERENCE DETAIL F/M03.01 FOR ADDITIONAL INFORMATION.
- ⑬ RETURN AIR THROUGH OPENING IN BACK OF VALANCE ABOVE DISPLAY WINDOW. REFER TO ARCHITECTURAL PLANS.
- ⑭ PROVIDE FIREMAN'S OVERRIDE SMOKE EVAC SWITCH 3-POSITION TOGGLE SWITCH (PURGE/EXHAUST - NORMAL - SHUTDOWN) MOUNTED INSIDE SPACE BY REAR SERVICE DOOR. SEE DETAILS J, K, AND M ON SHEET M03.01 FOR MORE INFORMATION.
- ⑮ TENANT TO MAINTAIN 2' X 6' RETURN AIR OPENINGS IN DEMISING WALL, IF NONE EXISTING, COORDINATE NEW OPENINGS WITH LANDLORD.
- ⑯ THE MALLS CONTRACTOR, 1ST MECHANICAL SERVICES INC, SHALL FURNISH AND INSTALL THE VAV BOX AT TENANT'S EXPENSE. ALLOW 3 WEEKS FOR DELIVERY. CONTACT: EMMET RIDDICK OR JOHNNY POE AT 770-346-0792.
- ⑰ CONNECT TO LANDLORD'S EXISTING MEDIUM PRESSURE DUCT WHERE SHOWN ON PLANS. TRANSITION DUCT AS REQUIRED.
- ⑱ INSTALL STRAIGHT DUCT SECTION LENGTH=MINIMUM 3 TIMES DUCT DIAMETER PRIOR TO FPVAV OR VAV BOX.
- ⑲ REMOVE EXISTING MEDIUM PRESSURE DUCT BACK TO LOCATION INDICATED ON PLANS. FIELD VERIFY DUCT SERVES NO OTHER TENANTS. COORDINATE WORK WITH LANDLORD PRIOR TO REMOVAL.
- ⑳ REPLACE EXISTING ROOFTOP UNIT IN PLACE WITH NEW LENNOX RTU. PROVIDE NEW CURB AS REQUIRED. CONNECT TO EXISTING SUPPLY AND RETURN DUCT MAINS IN CHASE. TRANSITION DUCTWORK AS REQUIRED. SEE STRUCTURAL DRAWINGS FOR MORE INFORMATION. PROVIDE CONTROL INTERFACE AS REQUIRED SO THAT NEW TRANE CONTROLS CAN BE USED WITH NEW LENNOX RTU.
- ㉑ TRANSITION DUCT MAIN AS REQUIRED TO FIT UNDER LOW SPRINKLER PIPE. MAINTAIN 20" DUCT HEIGHT MINIMUM AS SHOWN ON PLANS, IF POSSIBLE.
- ㉒ DUCTWORK BETWEEN TERMINAL UNIT AND LANDLORD'S DUCTWORK SHALL BE MEDIUM PRESSURE.
- ㉓ LOCATION OF ELECTRICAL AND CONTROL PANELS. DO NOT ROUTE DUCTWORK OR PIPING ABOVE THIS AREA.

MECHANICAL PLAN KEYNOTES

NTS

D

09/02/11



MECHANICAL PLAN

1/4" = 1'-0"

A

TBA
Thorson • Baker + Associates
CONSULTING ENGINEERS
3030 West Streetboro Road
Richfield, Ohio 44286
(330) 656-6688 PH
(330) 656-6675 FAX

Lbrands
STORE DESIGN & CONSTRUCTION
Three Limited Parkway • Columbus, Ohio 43230
Telephone: 614.415.7000 • Fax: 614.415.7349

THESE DRAWINGS AND SPECIFICATIONS ARE THE PROPERTY OF ELITE CONSTRUCTION GROUP, INC. AND SHALL NOT BE REPRODUCED OR TRANSMITTED IN ANY FORM OR BY ANY MEANS, ELECTRONIC OR MECHANICAL, INCLUDING PHOTOCOPYING, RECORDING, OR BY ANY INFORMATION STORAGE AND RETRIEVAL SYSTEM, WITHOUT THE WRITTEN PERMISSION OF ELITE CONSTRUCTION GROUP, INC. THESE DRAWINGS AND SPECIFICATIONS ARE THE PROPERTY OF ELITE CONSTRUCTION GROUP, INC. AND SHALL NOT BE REPRODUCED OR TRANSMITTED IN ANY FORM OR BY ANY MEANS, ELECTRONIC OR MECHANICAL, INCLUDING PHOTOCOPYING, RECORDING, OR BY ANY INFORMATION STORAGE AND RETRIEVAL SYSTEM, WITHOUT THE WRITTEN PERMISSION OF ELITE CONSTRUCTION GROUP, INC.

PROJECT INFORMATION: 010500587
VICTORIA'S SECRET
NORTH POINT MALL
SPACE #1050
1000 NORTH POINT CIRCLE
ALPHARETTA, GA 30022
DATE ISSUED: 09/19/14
DESIGNED BY: MAR
DRAWN BY: TBA
CHECKED BY: JMZ

REVISIONS:
1. NO ADDENDUM - LANDLORD COMMENTS
& MASTER UPDATES (10/15/01 & 01/04/2015)
2. ELITE CONSTRUCTION GROUP
LANCE JACKSON, TX
PHONE: 979-285-0712
NOTE: THESE PRINTS HAVE BEEN
REDUCED BY 50 PERCENT. SCALE
WILL BE 50 PERCENT OF WHAT IS
NOTED ON PLANS.

DATE ISSUED: 09/19/14
DESIGNED BY: MAR
DRAWN BY: TBA
CHECKED BY: JMZ

MECHANICAL PLAN

DRAWING NUMBER:
M02.02